

# DRIVE

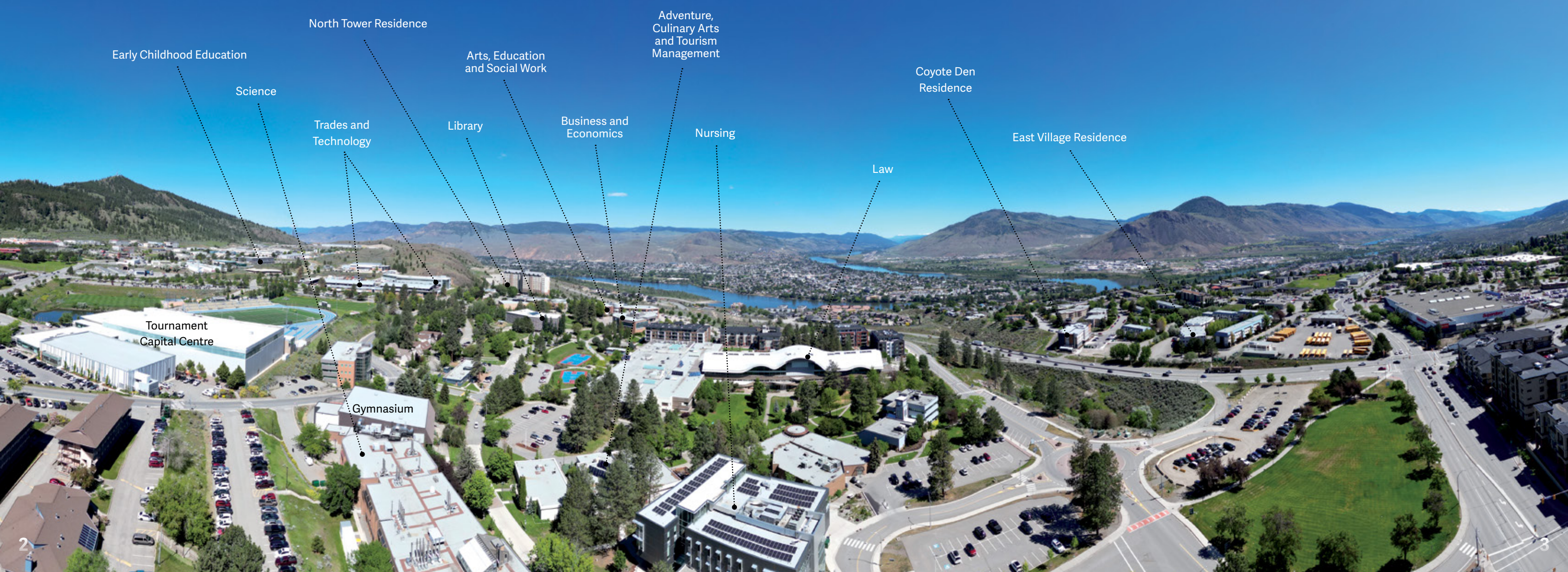
# WELCOME WEYT-KP

Secwepemctsín

Thompson Rivers University campuses are on the ancestral lands of the Tk'emlúps te Secwépemc (Kamloops campus) and the T'exelc (Williams Lake campus) within Secwepemcú'lecw, the traditional and unceded territory of the Secwépemc. The region TRU serves also extends into the territories of the St'át'imc, Nlaka'pamux, Nuxalk, T'silhqot'in, Dakelh and Syilx peoples.

Kamloops takes its name from the Secwepemctsín word **Tk'emlúps**, which means *meeting of the rivers*. The North and South Thompson Rivers **meet** in the centre of the city.

**T7ETSXEMÍNTE RE STSELXMÉM**  
To strive ahead





## Walking together every step

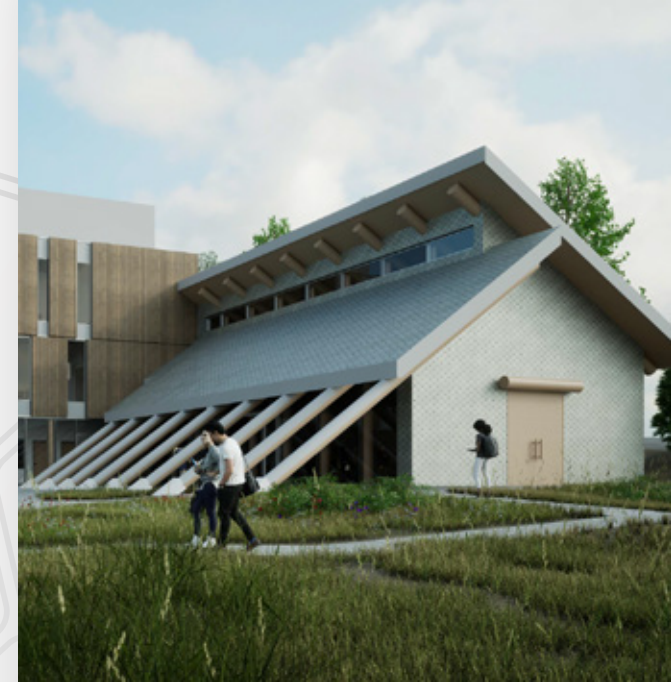
On the Kamloops and Williams Lake campuses, Indigenous students can find community and connection in your home away from home at Cplul'kw'ten - "The Gathering Place." Meet with an Elder for guidance and conversation and enjoy a free weekly soup circle.

In Kamloops, you'll have access to Indigenous counsellors and a student mentor through the Indigenous Mentor program.

In Williams Lake, the Coordinator of Indigenous Services can provide support during every step of your educational journey.

TRU welcomes Indigenous students from regional Secwépemc, Carrier, T̓silhqot̓'in, St'át'imc, Okanagan, Nuxalk, Nlaka'pamux and Métis communities, as well as those from Inuit communities and others across the country.

**2,913** Self-identified Indigenous students     **10%** of total student population



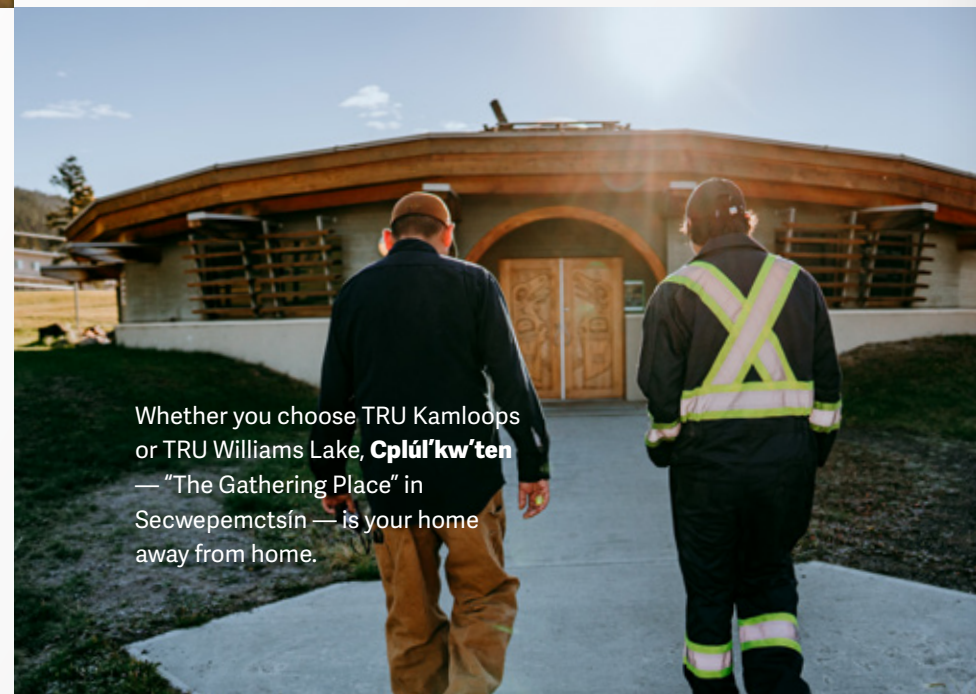
## TRU's Indigenous Education Centre

Designed in partnership with Tk'emlúps te Secwépemc and led by Indigenous architect Patrick Stewart, TRU's Indigenous Education Centre will be a hub for cultural celebration, academic support and connection for Indigenous learners, faculty and staff. Expected to open in 2026.

WEYT-K, LE7 RE7 STSKITS'C

# HELLO

*It's good you came*



Whether you choose TRU Kamloops or TRU Williams Lake, **Cplul'kw'ten** — "The Gathering Place" in Secwepemctsin — is your home away from home.

"Reach out. Cplul'kw'ten is a wonderful place to get support. University is a completely different social culture than we are used to. I was so confused when I first started at TRU, but after going to Cplul'kw'ten I was able to register for classes and find my way around the campus. Keep in touch with your culture. Our hearts and spirits are tied to our culture and when we nurture them, our minds are also nurtured. Our culture keeps us grounded."

— **Tara-Lynn Wilson**  
Juris Doctor (Law), 2024



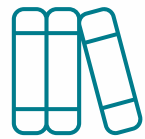
**31,174 students**

15,000+ on campus

18,583 online with Open Learning

2,913 Indigenous students

8,035 International students from 118 countries



**1 of 6**  
**RESEARCH**  
UNIVERSITIES  
IN BC

**#1 in sustainability**



TRU was the first Canadian university to earn the highest possible rating from the Association for the Advancement of Sustainability in Higher Education.

**AVERAGE**  
CLASS SIZE  
**31**

**140+**  
ON CAMPUS  
PROGRAMS



**60+**

**ONLINE PROGRAMS**

**FIND YOUR**

**TRU**

**YOUR CHOICE**

## On Campus

**STUDY TOGETHER,  
FACE-TO-FACE**

Build strong connections and immerse yourself in a diverse community.

Engage in hands-on learning through in-person classes and labs.

Participate actively in university life, from clubs to campus events.

## Open Learning

**STUDY FROM  
ANYWHERE, ANYTIME**

Enjoy the flexibility to live anywhere while you study.

Balance work and study with programs designed for your schedule.

Progress at your own pace, allowing for extended completion if needed.

## Combine OL and Campus

**STUDY YOUR WAY,  
ON YOUR SCHEDULE**

Experience the best of both worlds at TRU by blending on-campus and Open Learning courses — flexibility is your key to success.

**POPULATION 108,000**  
third fastest growing  
metropolitan area in Canada

**45 MINUTES**  
to Sun Peaks — the second  
largest ski area in Canada

**100**  
lakes within  
a one-hour drive

**3.5 HOURS** by road or  
**1 HOUR** by air from Vancouver



**What works best for you?**  
**CONTACT US TO LEARN MORE.**

# BEYOND THE CLASSROOM



50+ CO-OP PROGRAMS  
CO-OP ABROAD  
STUDY ABROAD  
FIELD SCHOOLS

APPRENTICESHIPS  
INTERNSHIPS  
PROFESSIONAL PRACTICUMS  
WORKSTUDY



UNDERGRADUATE RESEARCH  
VOLUNTEER OPPORTUNITIES  
CAREER SERVICES  
ACADEMIC SUPPORTS

WELLNESS CENTRE  
ACCESSIBILITY SERVICES  
MENTAL HEALTH SUPPORTS  
PEER MENTOR PROGRAMS



## Experience more

Find out more about what university life can offer!

Check out Career and Experiential Learning at [tru.ca/cel](https://tru.ca/cel)



Check out the Experiential Learning Hub for opportunities and resources.



Student Services are designed to provide everything you need for a successful university experience. From academic advising and tutoring to career guidance and mental health support, we are here every step of the way.

Our dedicated team is committed to helping you thrive, offering resources and assistance to enhance your academic, personal and social development.

Ahana Ahluwalia worked four co-op terms as a software developer for Telus Business Solutions while completing her Bachelor of Software Engineering.

Ahluwalia worked on a team automating, testing, developing and deploying an API platform and assisted with solutions related to network security.

"I had a great co-op experience, partly because my employer treated me like a team member from day one. They gave me the keys to the Ferrari and let me get in the driver's seat, so to speak."

– Ahana Ahluwalia

Find out more about student services at [tru.ca/services](https://tru.ca/services)

## After class

### Clubs and organizations

80+ options for every interest.

### Recreational sports

Intramurals and state-of-the-art facilities.

### Campus events

Cultural nights, guest lectures and music festivals.

### Outdoor adventures

Year-round activities in Kamloops.

### Student support

Career services, counseling and wellness.

### Cultural and arts scene

Galleries, theatre and workshops.

### Social spaces

Union building, green spaces and cafés for connection.



# BACK THE 'PACK



## Recreation

Join WolfPack Recreation for intramural team sports, drop-in sports, or fitness and yoga classes.

Play dodgeball, badminton, volleyball, soccer, basketball, cricket or pickleball. Catch bootcamp, circuit, strength, stretch, slow flow, dance... take your pick!

[tru.ca/recreation](http://tru.ca/recreation)

## Athletics

WolfPack student athletes and fans contribute to TRU's vibrant campus spirit.

All TRU students get free admission to regular season home games.

Varsity teams compete at the U SPORTS level, and include basketball, soccer and volleyball. Club sports include baseball and cheerleading.

If you are interested in trying out for a team, fill out the recruitment form at

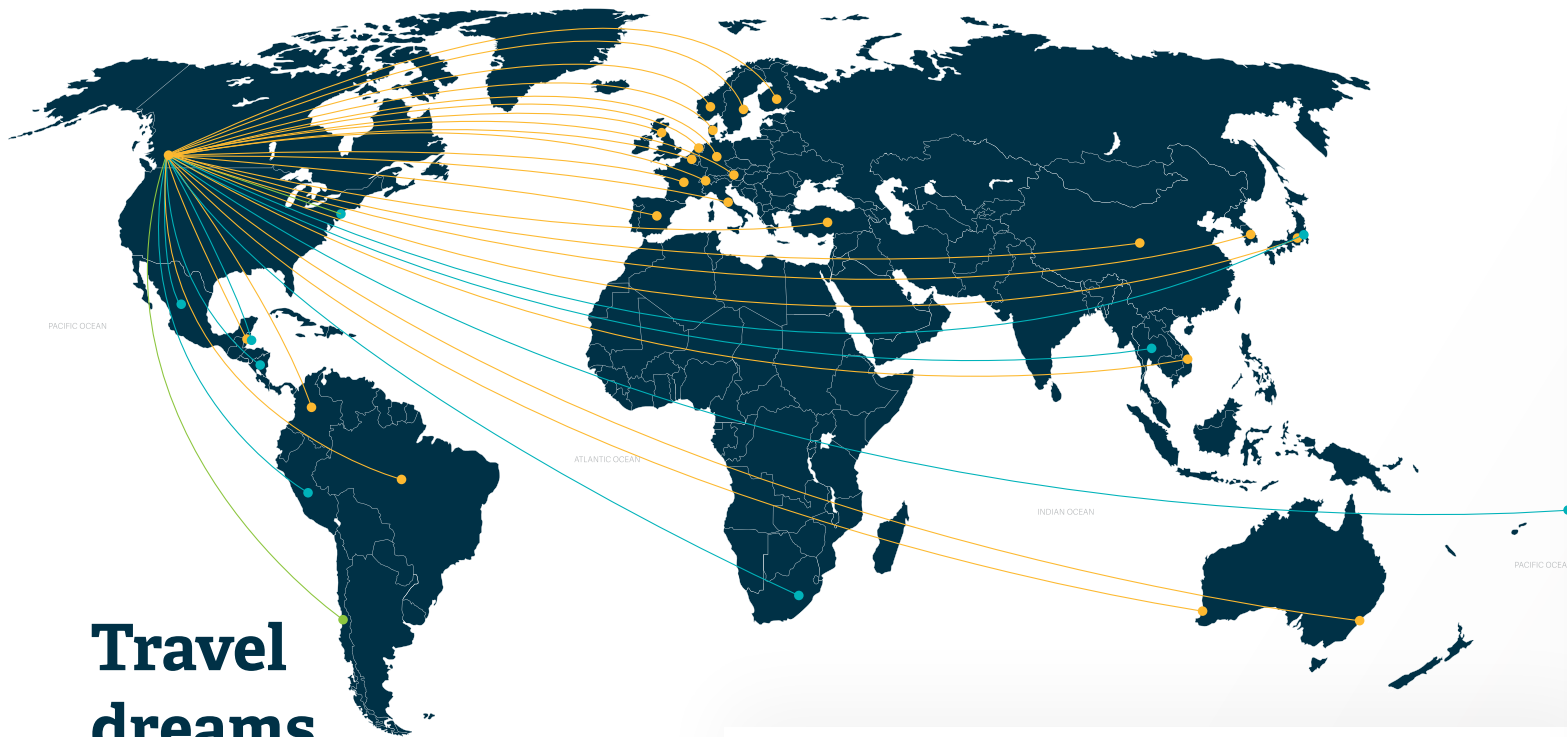
[gowolfpack.ca](http://gowolfpack.ca)



**Go WolfPack!**

# STUDY + TRAVEL

STUDY ABROAD AND FIELD SCHOOLS IN OVER 20 COUNTRIES



## Travel dreams start here

Spend a semester abroad for a life-changing journey — gain intercultural skills, new friends and job prospects while earning credits. Not keen on a whole semester? Opt for Field Schools, offering two to six weeks of international experience!



### Study abroad and field school opportunities vary each year.

If you're interested in study abroad or field school opportunities, please contact [studyabroad@tru.ca](mailto:studyabroad@tru.ca).

[tru.ca/studyabroad](https://tru.ca/studyabroad)

# CAMPUS HOUSING

Curious about food options on campus? We have 11 food spots right on campus and grocery stores and restaurants are just a short walk away. You can also get food delivered from all over the city to your residence.

Go to [tru.ca/food](https://tru.ca/food) to see what's available on campus.

First-year students coming directly from high school are guaranteed housing if you apply by **May 1, 2026**. Applications received after the deadline will be processed on a first-come, first-served basis.

## GET THE FULL UNIVERSITY EXPERIENCE BY LIVING ON CAMPUS.

Live walking distance from class and join a vibrant, active community of students from all over the world.

**Applications open mid-March.**



Scan the QR code to explore housing options.



## Coyote Den - Skelepéllcw

The new East Village residence is centrally located and within walking distance of campus, shopping and transit. Each unit has a private entrance, bathroom and apartment-sized kitchen. Shared and single bedroom suites are available.

**COYOTE DEN** SEPTEMBER – APRIL

Application fee	Single Room	Double Room (shared)
\$100	\$10,300*	\$4,605*



## North Tower

Enjoy one of the best views in the city at the 11-storey North Tower. Access premium amenities such as a cardio room, dance studio, patio with large BBQ, games room and regular social activities.

**NORTH TOWER** SEPTEMBER – APRIL

Application fee	2 or 4 bedroom suite
\$100	\$9,560*



## East Village

Have the independence of off-campus living with the convenience of on-campus life at East Village. This location is ideal for students looking for a more independent, mature community with student-friendly amenities.

**EAST VILLAGE** SEPTEMBER – APRIL

Application fee	4 bedroom suite
\$100	\$6,785*

\*Rates are for the 2025-26 year and are subject to change without notice.

# HOW TO APPLY



GO TO  
[tru.ca/apply](https://tru.ca/apply)  
Application fee: \$33.56\*  
\* charged when you are admitted to the program.



## Questions?

Contact the  
Future Students Office

Toll Free: 1-888-663-1653  
[futurestudents@tru.ca](mailto:futurestudents@tru.ca)



## General admission requirements

### For undergraduate studies

Applicants for undergraduate programs on campus must qualify under one of the following categories:

- Graduate from a recognised high school curriculum, or
- Complete 12 or more credits of transferrable post-secondary coursework, or
- Be 19 years of age or older with no formal education in the past 2 years (some program restrictions apply).

English language requirements:

- Grade 12 English or equivalent with minimum 73% for undergraduate degrees or 67% for diploma or certificate programs.

Learn more at [tru.ca/reqs](https://tru.ca/reqs)

## Program specific admission requirements

In addition to meeting the general admission requirements, you must meet your program's specific admission requirements. Go to [tru.ca/programs](https://tru.ca/programs) or [pages 16-20](#) for full details.

## Secondary School Course Equivalents

Don't see your completed course listed in the program requirements chart? High schools across Canada have different courses that are equal in value (equivalent) that meet our program requirements.

Be sure to check your courses at: [tru.ca/equivalents](https://tru.ca/equivalents)

## Flexible entry

Our flexible entry pathway allows students to begin their university program while upgrading or completing missing requirements. Learn more at [tru.ca/reqs](https://tru.ca/reqs)

To learn more about your options, including how to upgrade skills or courses to enter specific programs, connect with the Future Students Office at [tru.ca/future/contact](https://tru.ca/future/contact)

## University and Employment Preparation

We offer University Preparation and Employment through Adult Basic Education and English for Academic Purposes. Students who complete enriched secondary school courses can also earn first year credit.

[tru.ca/uprep](https://tru.ca/uprep)

## Advanced credit and enriched programs

Students who complete enriched secondary school courses can earn first year university credit.

**International Baccalaureate:** for higher-level courses passed with a grade of 5 or higher

**Advanced Placement:** for approved subjects passed with a grade of 4 or higher

[tru.ca/asep](https://tru.ca/asep)

## TRU Start

BC high school students can take select TRU programs and courses while still in high school.

[tru.ca/trustart](https://tru.ca/trustart)

## Application deadlines

APPLICATIONS OPEN OCTOBER 1 FOR FALL 2026, WINTER 2027 AND SUMMER 2027.

Deadlines to apply for admission are as follows.

## Program-specific application deadlines

Applications are reviewed and offers are made after the application deadline.

PROGRAM	APPLICATION DEADLINE	
Bachelor of Education (Secondary) STEM	<b>February 15</b>	<b>Summer (July) intake only</b>
Bachelor of Education in Trades and Technology	<b>February 15</b>	
Bachelor of Education (Elementary)	<b>January 15</b>	<b>Fall (September) intake only</b>
Bachelor of Science in Nursing	<b>January 31</b>	
Respiratory Therapy Diploma	<b>February 1</b>	
Veterinary Technology Diploma	<b>February 1</b>	
Juris Doctor (Law)	<b>February 10</b>	
Bachelor of Social Work	<b>February 28</b>	
Trades Foundation and Apprenticeship Programs	<b>Intake dates vary. Applications are accepted year-round.</b>	
Graduate programs	<b>Intake dates and application deadlines vary.</b> See <a href="https://tru.ca/graduate-studies">tru.ca/graduate-studies</a> for details.	

Programs will continue to accept applications beyond these deadlines where space is available. Check [tru.ca/programs](https://tru.ca/programs) for the most up-to-date availability.

## All other programs

Applications are reviewed and assessed upon receipt of required documents. Offers are made year round.

INTAKE	APPLICATION DEADLINE
Fall (September)	<b>May 1</b>
Winter (January)	<b>September 1</b>
Summer (May)	<b>January 1</b>

*Note: not all programs have a summer and winter intake.*

## Why self-identify as Indigenous on your application?

TRU applications have an optional and confidential section on Indigenous self-identification. Checking "yes" connects you with services and events of interest. Some TRU programs also allocate seats to those who self-identify as Indigenous. You may also be eligible for priority housing.



# APPLY EARLY



Some programs have limited capacity.



# PROGRAMS

## AND ADMISSION REQUIREMENTS

<b>Laddering Options</b> Students can apply credit earned in this credential towards a higher-level program.	<b>Co-op</b> Alternate work and on-campus study terms.	<b>Indigenous Admissions</b> Reserved seats for students who self-identify as Indigenous and meet admission requirements.	<b>Study Abroad</b> Take a semester or two abroad while still earning course credits.	<b>Available Online</b> Program or courses are also available through TRU Open Learning.	<b>Flexible Entry</b> Begin your program while upgrading or completing missing requirements.	<b>Williams Lake</b> Available at Williams Lake campus.
L	C	IA			FLEX	WL

PROGRAM	ADMISSION REQUIREMENTS	ADDITIONAL INFO
<b>ADVENTURE AND TOURISM</b>		
<b>Bachelor of Tourism Management</b> 	73% in English Studies 12 or English First Peoples 12; 60% in Foundations of Math 11, Pre-Calculus 11 or Foundations of Math 12	<i>Majors:</i> Adventure Studies, Entrepreneurship, General, Tourism Studies
<b>Events and Conventions Management Diploma</b> <b>Sport Event Management Diploma</b> <b>Tourism Management Diploma</b> 	73% in English Studies 12 or English First Peoples 12; 60% in Foundations of Math 11, Pre-Calculus 11, or Foundations of Math 12	
<b>Adventure Guide Certificate</b> 	19 years of age at the start of the program; English Studies 12 (or equivalent); any Math 11; attend a program information session; completed Adventure Program Information Package	2nd year: Adventure Guide Diploma

<b>ARTS, HUMANITIES AND SOCIAL SCIENCES</b>		
<b>Bachelor of Arts</b> 	73% in English Studies 12 or English First Peoples 12 Specific majors will require additional high school pre-requisites such as Math 11 or higher	<i>Majors:</i> Applied Creative Arts, Criminology (blended online), Economics, Economic and Political Studies, English, Geography and Environmental Studies, History, Mathematics, Mathematics and Economics, Philosophy, Psychology, Sociology  <i>Other areas of study:</i> Archaeology and Geology, Creative Writing, Digital Media Studies, Environmental Economics and Sustainable Development, Geography, International Professional Communication, Language and Global Studies, Political Studies, Public Relations, Theatre  First year Arts Cohort: <a href="http://tru.ca/artscohort">tru.ca/artscohort</a>
<b>Bachelor of Communication and Digital Journalism</b> 	73% in English Studies 12 or English First Peoples 12	<i>Majors:</i> Digital Journalism, Media Studies, Public Relations

PROGRAM	ADMISSION REQUIREMENTS	ADDITIONAL INFO
<b>ARTS, HUMANITIES AND SOCIAL SCIENCES (CONTINUED)</b>		
<b>Bachelor of Interdisciplinary Studies</b> 	73% in English Studies 12 or English First Peoples 12; Successful completion of 60 post-secondary credits (diploma) with a minimum GPA of 2.5	
<b>Associate of Arts</b> 	73% in English Studies 12 or English First Peoples 12	
<b>Police and Justice Studies Diploma</b> 	73% in English Studies 12 or English First Peoples 12 Additional requirements: Statement of Career Objectives; Resume; Some required courses require physical fitness standards and may require a criminal record check	
<b>Indigenous Studies Certificate</b> 	73% in English Studies 12 or English First Peoples 12	

<b>BUSINESS, ECONOMICS AND MANAGEMENT</b>		
<b>Bachelor of Business Administration</b> 	73% in English Studies 12 or English First Peoples 12; 67% in Foundations of Math 12 or Pre-Calculus 12	<i>Majors:</i> Accounting, Economics, Entrepreneurship, Finance, General Business, Human Resource Management, International Business, Marketing, Supply Chain Management  <i>Other areas of study:</i> Business Law, Environmental Economics and Sustainable Development, Financial Markets and Institutions, Financial Services, Leadership, Project Management  Dual degree with Bachelor of Computing Science available
<b>Accounting Technician Diploma</b> <b>Associate of Commerce and Business Administration Diploma</b> 	73% in English Studies 12 or English First Peoples 12; 67% in Foundations of Math 12 or Pre-Calculus 12	
<b>Executive Assistant Diploma</b> 	73% in English Studies 12 or English First Peoples 12; 67% in Foundations of Math 12 or Pre-Calculus 12; Completion of the TRU Administrative Assistant Certificate, or equivalent one-year certificate program	
<b>Management Diploma</b> 	73% in English Studies 12 or English First Peoples 12; 67% in Foundations of Math 12 or Pre-Calculus 12	

<b>EDUCATION</b>		
<b>Bachelor of Education - Elementary</b> 	Minimum 2-4 years of post-secondary or Red Seal trade qualification (varies by program), volunteer hours, and references required for admission	
<b>Bachelor of Education - STEM</b> <b>Bachelor of Education - Trades and Technology</b>	See <a href="http://tru.ca/education">tru.ca/education</a> for selection criteria	
<b>Early Childhood Education Diploma</b> 	73% in English Studies 12 or English First Peoples 12	Infant/Toddler Educator Post-Diploma Certificate, or the Special Needs Educator Post-Diploma Certificate available with one additional semester

## HEALTH SCIENCES

<b>Bachelor of Science in Nursing</b> <b>IA</b>	73% in English Studies 12 or English First Peoples 12; 73% in any Math 12 course; 73% in Anatomy and Physiology 12; 73% in Chemistry 11; 73% in one other science 11 or 12  CASPer Situational Judgement Test          Grade 12 (or equivalent) or Mature Student status; Overall GPA of 3.0 or higher in the last 30 credits; Completion of the following 12 credits:  English 1000 level or higher with a C+ minimum; Biology 1000 level or higher with a C+ minimum; Social Science 1000 or higher with a C+ minimum; Math/Science 1000 or higher with a C+ minimum  CASPer Situational Judgement Test  See <a href="http://tru.ca/nursing">tru.ca/nursing</a> for more information on selection criteria	<b>HIGH SCHOOL APPLICANTS</b>  <i>Students who have graduated high school or have completed university preparatory (UPrep) or adult basic education (ABE) coursework. A blend of UPrep/ABE and high school courses may be considered.</i>  OR  <i>Students with up to 9 credits of post-secondary coursework. GPA from these courses will not apply.</i>  <b>POST-SECONDARY APPLICANTS</b>  <i>Students with 12 credits or more of post-secondary coursework (by the application deadline).</i>  <i>Admission is selective and competitive. Not all applicants who meet the minimum requirements are accepted to the program.</i>  Williams Lake: first two years (with transfer to Kamloops in third year) typically offered every second year.
<b>Practical Nursing Diploma</b> <b>WL</b>	65% in English Studies 12 or English First Peoples 12; 60% in Foundations of Math 11 or equivalent; 60% in Anatomy and Physiology 12; Human Anatomy and Physiology for Practical Nurses (PNUR 1300 or HLTH 1121 at TRU with 65%)	Only available in WL. Intake every two years  Next intake: September 2026
<b>Respiratory Therapy Diploma</b> <b>L</b>	BC Grade 12 (or higher) with a 67% minimum average; 67% in English Studies 12 or English First Peoples 12; 67% in Foundations of Math 12 or Pre-Calculus 12; 67% in Anatomy and Physiology 12; 67% in Physics 11; 67% in Chemistry 12  See <a href="http://tru.ca/resp">tru.ca/resp</a> for information on selection criteria	Admission is selective and competitive. Not all applicants who meet the minimum requirements are accepted to the program.  Fast Track (year two entry) seats available for students who have completed a minimum of 18 required post secondary credits. For more information on requirements and selection, visit <a href="http://tru.ca/resp">tru.ca/resp</a> .
<b>Health Care Assistant Certificate</b> <b>WL</b>	19 years of age (must turn 19 within 4 months of program start date); Successful completion of BC Grade 11 minimum (or equivalent); 73% in English Studies 11	

## SCIENCE AND TECHNOLOGY

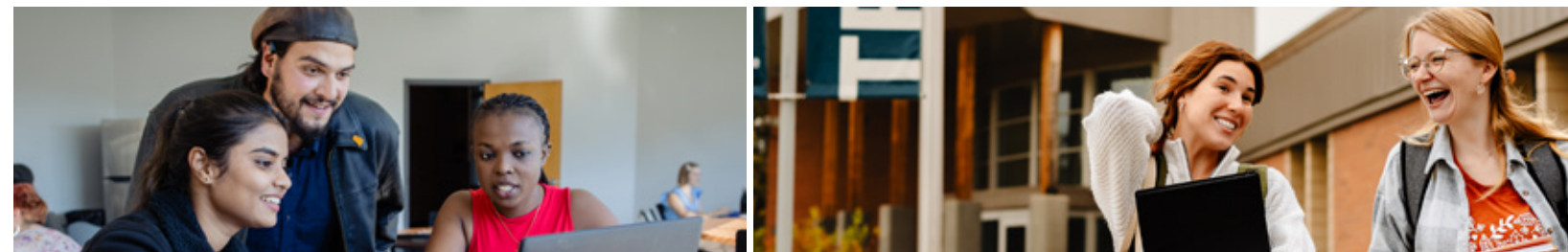
<b>Bachelor of Computing Science</b> <b>C FLEX</b>	73% in English Studies 12 or English First Peoples 12; 67% in Pre-Calculus 12 or Foundations of Math 12	Dual degree with Bachelor of Business Administration available
<b>Bachelor of Engineering in Computer Engineering</b>	73% in English Studies 12 or English First Peoples 12; 67% in Pre-Calculus; 67% in Chemistry 11; 67% in Physics 11 (Physics 12 preferred)	Five-year program with mandatory co-op
<b>Bachelor of Engineering in Software Engineering</b>	73% in English Studies 12 or English First Peoples 12; 67% in Pre-Calculus; 67% in Chemistry 11; 67% in Physics 11 (Physics 12 preferred)	Five-year program with mandatory co-op
<b>Bachelor of Natural Resource Science</b> <b>C FLEX</b>	73% in English Studies 12 or English First Peoples 12; 67% in Pre-Calculus 12; 67% in Life Sciences 11; 67% in Chemistry 11	

## SCIENCE AND TECHNOLOGY (CONTINUED)

<b>Bachelor of Science</b> <b>C FLEX</b>	73% in English Studies 12 or English First Peoples 12  Specific majors will require additional high school pre-requisites, such as:  67% in Pre-Calculus 12; Chemistry 11; Physics 11; 67% in Life Sciences 11 or Anatomy and Physiology 12  See <a href="http://tru.ca/science/programs/bsc">tru.ca/science/programs/bsc</a> for more information	<b>Majors:</b> Animal Biology, Biology, Cellular, Molecular and Microbial Biology, Chemical Biology, Chemistry, Computing Science, Data Science, Ecology and Environmental Biology, Environmental Chemistry, General Science, Mathematical Sciences, Mathematics, Mathematics and Economics, Physics  <b>Other areas of study:</b> Environmental Economics and Sustainable Development, Management, Archaeology and Geology
<b>Architectural and Engineering Technology Diploma</b>	73% in English Studies 12 or English First Peoples 12; 67% in Foundations of Math 12 or Pre-Calculus 11; Physics 11	
<b>Computer Network and Cybersecurity Diploma</b> <b>Computing Science Diploma</b> <b>L C FLEX</b>	73% in English Studies 12 or English First Peoples 12; 67% in Pre-Calculus 12 or Foundations of Math 12	
<b>Regenerative Agriculture Diploma</b> <b>WL</b>	English Studies 12 or English First Peoples 12; 60% in Foundations of Math 11	Only available in WL
<b>Veterinary Technology Diploma</b> <b>WL</b>	67% in English Studies 12 or English First Peoples 12; 67% in Foundations of Math 11; 67% in Life Sciences 11  Additional requirements: Anatomy and Physiology 12 is strongly recommended; proof of Canadian Citizenship or PR status; supplemental application; resume; three references	Admission is selective and competitive. Not all applicants who meet the minimum requirements are accepted to the program.
<b>Engineering Transfer Certificate (Common first year)</b>	73% in English Studies 12 or English First Peoples 12; 73% in Pre-Calculus 12; 73% in Physics 12; 73% in Chemistry 11	Formal transfer agreement with the University of British Columbia and the University of Victoria
<b>Regenerative Agriculture Certificate</b> <b>WL</b>	English Studies 12 or English First Peoples 12; 60% in Foundations of Math 11	Only available in WL

## SOCIAL WORK AND HUMAN SERVICE

<b>Bachelor of Social Work</b> <b>IA</b>	A minimum of 54 credits (60 credits recommended) met by general university studies, or a combination of Human Service certificate/diploma or equivalent with a minimum GPA of 2.67	
<b>Human Service Diploma</b> <b>Education Assistant and Community Support Certificate</b> <b>L WL</b>	73% in English Studies 12 or English First Peoples 12; two reference letters	



## WILDFIRE STUDIES

<b>Diploma in Wildfire Studies</b> L	73% in English Studies 12 or English First Peoples 12	Two-year program comprises of four 9-credit Wildfire certificates and 24 general education credits
<b>Sociocultural Dynamics of Wildfire Certificate</b>	73% in English Studies 12 or English First Peoples 12	9 credits each. Can be applied to Wildfire Studies Diploma
<b>Wildfire Communications and Media Certificate</b>		
<b>Wildfire Leadership Certificate</b>		
<b>Wildfire Science Certificate</b> L		

## UNIVERSITY AND EMPLOYMENT PREPARATION

<b>Adult Basic Education/ University Preparation</b>	At least 17 years of age or one year out of school; Canadian citizen or Permanent Resident	
--	---	--

## TRADES & INDUSTRIAL TECHNOLOGY

<b>Foundation Certificates</b>	BC Grade 12 (or equivalent) or mature student status; English 11 with a minimum of 60%; any Math 11 with a minimum of 60%  Admission requirements vary by program; some foundation programs require a minimum of grade 10 math. Instrumentation and Control Technician requires 60% in English 12	Automotive Service Technician*, Carpenter (Residential Construction)*, Electrician (Construction)*, Heavy Mechanical (Diesel Engine*, Heavy Duty Equipment*, Transport Trailer Technician*, Truck and Transport Mechanic*), Horticulture, Industrial Mechanic (Millwright/Machinist)*, Instrumentation and Control Technician*, Refrigeration and Air Conditioning Mechanic*, Retail Meat Processing (meatcutter) *, Piping (Plumber*, Pipefitter*, Steamfitter*), Power Engineer (4th Class Certificate), Professional Cook (Culinary Arts)*, Welder*  *TRU offers the apprenticeship level training  Some trades are offered in Williams Lake. See <a href="http://tru.ca/williamslake">tru.ca/williamslake</a> programs for details
--------------------------------	---	---

<b>Water and Wastewater Certificate or Diploma</b> L	BC Grade 12 (or equivalent)	
---	-----------------------------	--



TRU offers several Graduate and Post-graduate programs as well as a Juris Doctor (Law) program. Visit [tru.ca/graduate](http://tru.ca/graduate) for more information.



# KNOW YOUR COSTS

## PLAN FOR YOUR FUTURE WITH OUR COST ESTIMATOR TOOL

Understanding how much university will cost doesn't have to be complicated. Use our cost estimator tool to get a sense of how much your yearly costs will be, including tuition and fees.

Learn more about tuition and fees at [tru.ca/tuition](http://tru.ca/tuition)

## COST ESTIMATOR



## Average per credit costs

We offer competitive tuition and fees to enhance educational accessibility. Tuition varies by program, determined by factors like the number of courses you take and whether your program requires labs.

PROGRAM TYPE	TYPICAL COST
<b>Undergraduate academic</b> per credit rate	<b>\$161.87</b>
<b>Career/technical</b> per credit rate	<b>\$151.45</b>
<b>Vocational</b> per month full-time	<b>\$454.60</b>

## Average first year costs: Bachelor of Arts program

If you take a full course load of 5 courses each semester, your estimated average costs are:

Tuition: **\$4,856.10**

Fees: **\$1,684.82**

Example course cost: **\$485.61**

(based on three credit course at per credit rate of \$161.87)

These fees are for the 2025-2026 Academic Year

# STUDENT AWARDS & FINANCIAL AID

## Undergraduate Entrance | Applications open in December

### TRU Undergraduate Entrance Scholarships

Recognizes academic excellence, leadership, service and accomplishments that foster TRU's values

Up to \$30,000 per scholarship

### TRU Assurance Bursaries

For new and returning bachelor degree students, with preference to students enrolled in the BA, BBA, BSc, BCDJ or BCS, and/or from the TRU region

Up to \$20,000 per bursary

### TRU Undergraduate Entrance Awards

Recognizes leadership, service and accomplishments that foster TRU's values, with preference to first generation university students

up to \$4,000 per award

### TRU Undergraduate Entrance Bursaries

For new, full-time, diploma or bachelor degree students facing financial hardship

Up to \$4,000 per bursary

*\*For full-time, campus-based bachelor degree or diploma students who are Canadian citizens or permanent residents*

More than **\$6.3 million** in annual undergraduate funding

**Don't miss out!** Be sure to check opening dates and deadlines and apply ahead of time:

[tru.ca/entrance](https://tru.ca/entrance)

## Funding options for Indigenous students

Many avenues exist for funding your education. Some Indigenous students are eligible to receive support from their band or other organizations to pay for post-secondary education.

### Possible funding sources:

- Band funding
- Métis funding
- Scholarships and awards
- External sources eg. Indspire, Irving K. Barber Award, New Relationship Trust (BC First Nations)
- Student aid

## DEADLINES TO APPLY FOR SCHOLARSHIPS, AWARDS AND BURSARIES

Entrance Scholarships <b>March 1, 2026</b>	Entrance Awards <b>April 1, 2026</b>	Assurance Bursary <b>End of May 2026</b>
---	---	---

### Provincial Tuition Waiver

This fund waives tuition and fees for eligible former BC Youth In Care who are looking to attend TRU. This requires a separate application and students must have been admitted to TRU before accessing this waiver.



Connect with our Qelmu'cw (Indigenous) Future Student Advisors for more details.

If you're interested in diploma or certificate programs, they can also provide information about different funding schedules.

[tru.ca/indigenous/future-students](https://tru.ca/indigenous/future-students)



"So much financial stress was taken off my shoulders — now I can really focus on my journey and my goals and not have that financial burden."

—Samantha Jo Haire, Bachelor of Science

## Questions?

Contact Student Awards & Financial Aid  
250-828-5024 | [entrance@tru.ca](mailto:entrance@tru.ca)

## WANT MORE FUNDING OPTIONS?

[tru.ca/awards/external-funding](https://tru.ca/awards/external-funding) to find external award resources.

QUESTIONS? CONTACT US!



**Future Students Office**

Welcome Centre  
943 College Drive  
Kamloops, BC V2C 0C8  
futurestudents@tru.ca  
futureindigenous@tru.ca  
250-828-5006  
1-888-663-1653 (toll-free in Canada)

**tru.ca/future**

Accessibility Services  
250-828-5023  
as@tru.ca

Assessment Centre (Accuplacer)  
250-828-5470  
assess@tru.ca  
tru.ca/assessment

Student Awards  
250-828-5024  
finaid@tru.ca  
tru.ca/awards

Housing  
tru.ca/housing

Career and Experiential Learning  
250-371-5627  
careereducation@tru.ca  
tru.ca/cel

Campus Visits  
tru.ca/tours

FOLLOW US ON SOCIAL MEDIA



@ThompsonRiversU

#mytru



**Book an appointment**  
with the Future Students Office



Scan QR to book



This publication was printed in August 2025 before the 2026/2027 academic year. If there are discrepancies between this publication and the Thompson Rivers University calendar, the calendar will take precedence • FUT26001